

# SMITH TIMBER WORKS

## Strategic Growth Leader

Sawdust in your DNA? Building Science Nerd? Weak in the knees for a good timber structure?

Got relationships in the biz?

Ready to put it to work differently?

Keep reading.

Smith Timber Works · 150 Mile House, BC · [smithtimberworks.com](http://smithtimberworks.com)

---

### ABOUT US

*Smith Timber Works launched in 2004 with a Toyota pickup, a tool pouch, and a flip phone. The ambition was simple: build things worth building, make time for flyfishing and work / life balance. Build around our values – People first. Quality. Innovation. Kaizen.*

*Tools have changed; priorities haven't.*

Today, STW is a Canadian-owned design, fabrication, and construction company operating an 18,000 sq. ft. prefabrication facility and five-acre yard near Williams Lake, BC. We design, fabricate, and deliver premium timber structures and prefabricated building enclosures across Canada and beyond — residential, commercial, and institutional.

We are not a framing crew, a sawmill, or a drafting company. We build construction solutions. Our team brings over 100 years of combined construction experience to every project, and we design from that experience. Our process; digital manufacturing, design-assist, prefabrication, and structural integration de-risks construction projects and compresses timelines.

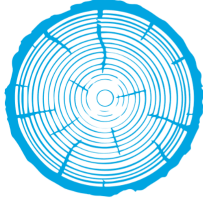
What we do:

- Panelized wall and roof cassette systems. Designed and built in a controlled shop environment for Net Zero, Net Zero Ready, and Passive House-compatible configurations
- Premium structural timber, post-and-beam, glulam, and heavy timber packages
- In-house 3D design and drafting, from concept through fabrication-ready shop drawings
- Structural steel integration coordinated alongside timber and panel systems
- Rural, Remote and First Nations community builds where manufacture-ready prefabrication makes complex projects viable

**We're not looking for someone to generate noise. We're looking for someone to build the right relationships, chase the right projects, and grow with intention.**

---

### THE ROLE



# SMITH TIMBER WORKS

As our Strategic Growth Leader, you'll sit at the intersection of craft and commerce. You'll identify projects worth pursuing, build relationships with architects and builders before drawings are finalized, and help us scale without losing what makes us great. This is a BC based role, and your phone and laptop can maintain contact with the STW mothership.

*Your focus is to share Smith Timber Works with the world. Your target is brand development, partnerships, and ensuring that the shop is bustling.*

---

## WHAT YOU'LL OWN

- Identify and pursue high-value, values-aligned project opportunities
- Get into projects early, before construction drawings lock in the details
- Lead proposals and client presentations that reflect our capabilities
- Contribute to recruiting, marketing direction, and internal process improvements

---

## COMPENSATION

On-target earnings

**\$63K – \$85K+**

Base compensation + commissions

*Incentives are structured around real outcomes — leads, closed revenue, successful hires. We'll walk through the full plan when we connect.*

---

## YOU'LL FIT HERE IF

- You've worked in construction, design, or architecture, and you have the relationships to prove it
- You can hold your own in a technical conversation and know your way around a job site
- You think long-term and value people's time
- CRM systems, network engagement, proactive outreach and strategic planning don't feel like foreign languages
- You want to grow with a company that knows where it's headed and is deliberate about how it gets there

---

We're aimed at intentional growth, and we want the right person in this seat.

If that sounds like you, please send a short note and share a project that you were a part of.

[info@smithtimberworks.com](mailto:info@smithtimberworks.com) · 250.296.3363

[smithtimberworks.com/careers](https://smithtimberworks.com/careers)