

SMITH TIMBER WORKS

Lead Carpenter / Team Lead

Smith Timber Works – 150 Mile House, BC

Build Interesting Projects. Lead a Strong Team. Grow With Us.

Smith Timber Works is looking for an experienced **Lead Carpenter / Timber Framer / Shop Lead** ready to step into a leadership role. This position is ideal for someone who enjoys building exceptional projects while helping guide and support a skilled crew.

You'll work on **premium timber frame structures, high-performance prefab assemblies, and custom builds across British Columbia and beyond.**

If you enjoy working hard, solving problems, and building with a team that takes pride in their craft – we'd like to hear from you.

About Smith Timber Works

Smith Timber Works is a **design-build, timber framing, and high-performance prefab company** based in **150 Mile House, BC.**

We build:

- Custom timber frame structures using premium Douglas Fir
- High-performance prefab wall and roof assemblies
- Residential and commercial construction projects
- Precision-built components shipped across Canada

Our shop combines **traditional craftsmanship with modern production systems.** We value efficiency, quality, and continuous improvement.

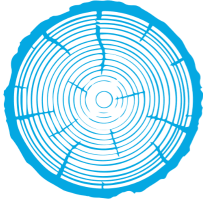
We also believe in **work-life balance**, offering **4-day work weeks, flexible schedules, and a supportive team environment.**

What You'll Do

As a **Lead Carpenter / Shop Lead**, you help guide daily operations and ensure projects move smoothly from drawings to finished assemblies.

Your responsibilities include:

- Leading and mentoring carpenters and shop team members



SMITH TIMBER WORKS

- Acting as the bridge between craftsmen and management
- Overseeing prefab production workflows from drawings to finished components
- Assisting project managers with scheduling and milestone planning
- Ensuring projects meet quality, safety, and production targets
- Supporting improvements to shop systems, processes, and workflows
- Maintaining organization and efficiency in daily operations
- Creating a positive team environment that supports productivity and collaboration

Your role is essential in helping Smith Timber Works continue to grow while maintaining our reputation for **quality and precision craftsmanship**.

Who You Are

We are looking for someone who is:

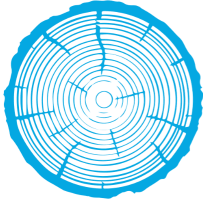
- Trustworthy, reliable, and accountable
- A clear communicator and strong team collaborator
- A motivated leader who supports and mentors others
- Organized and able to see the big picture
- A creative problem solver with a “can-do” approach
- Detail-oriented and committed to high quality work
- A forward thinker who stays several steps ahead of the task at hand

You enjoy **working with people, building great projects, and continuously improving systems and workflows**.

Skills & Experience

Ideal candidates will have:

- Minimum **6+ years experience in carpentry and/or timber framing**
- Journeyman, Red Seal, or equivalent trade experience (preferred)



SMITH TIMBER WORKS

- Leadership experience as a **Shop Lead, Foreman, or Crew Lead**
- Experience with residential or commercial construction
- Experience mentoring apprentices or junior carpenters
- Experience with shop production or prefab systems
- Familiarity with CAD or digital drawings (an asset)
- Valid BC driver's license

Experience with **European or European-influenced carpentry systems** or **high-performance prefab assemblies** is highly valued.

What We Offer

- **\$35-45/hour** depending on experience
- **Performance bonuses**
- **4-day work weeks**
- Full-time year-round work
- Benefits after probation
- Paid training and professional development opportunities
- Opportunities to grow into **management and leadership roles**

You'll be part of a **strong team building high-quality projects in the Cariboo while enjoying an incredible outdoor lifestyle.**

Join Our Team

If you're ready to build exceptional projects and grow with a progressive company, we want to hear from you.

Please send your **resume and cover letter** to:

info@smithtimberworks.com